

Uwin®

UWIN

LED  
PRODUCT  
**CATALOG**  
SERIES



## ABOUT US

Jiangmen ChuangXing(Uwin) Lighting Electrical Appliances Co., Ltd. founded in 2012, is located in Jianghai District, Guangdong Province. The production and operation site of the company is nearly 8000 square meters.

The company is committed to the application and R & D of building interior lighting products.

It is a professional lighting enterprise integrating R & D, production, sales and service.

The products have passed CCC, SASO and CE certification, serving 60 +strategic cooperation brands at home and abroad.

Including areas: hotels, villas, clubs, shops, shopping malls.

Our company takes R & D as the soul, quality as the basis, service as the purpose, and aims to become a well-known brand in the high-end commercial lighting small field of the lighting industry.

We have a professional product R & D and design team+ professional project service team + personalized customization team, our team is young, energetic and experienced.

We pay attention to the combination of lamps and lights with the environment, so that lamps and lights become a kind of beauty and a part of energy conservation and environmental protection.

Through the continuous innovation of product development and the continuous pursuit of quality.

The company has established long-term and in-depth cooperation with customers at home and abroad.

# DEVELOPMENT HISTORY

2010



**2010**

U.WIN LED LIGHTING ESTABLISHED.

2012



**2012**

DEVELOPED FINISHED PRODUCT FOR SAUDI ARABIA MARKET.



**2014**

STARTED IN ALUMINIUM DIE-CASTING.

2015



**2015**

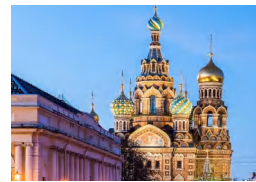
EXPAND OUR FACTORY AND PRODUCTION ON LED BUSINESS, DOUBLE PRODUCTION CAPACITY.

2017



**2017**

SUCCESS IN SOUTHEAST ASIAN, MIDDLE EAST MARKET.



**2020**

TRY TO INTO EUROPE MARKET, GO TO ALL THE WORLD.

2021



**2021**

IMPROVE PRODUCTIVITY AND PLANT ENVIRONMENT.



**2022**

SUCCESSFUL DEVELOPMENT OF THE EUROPEAN MARKET, WITH A NUMBER OF STABLE CUSTOMERS.

2025



**2023**

SIGNIFICANT EXPANSION OF PLANTS AND REFINEMENT OF PRODUCTION CAPACITY.

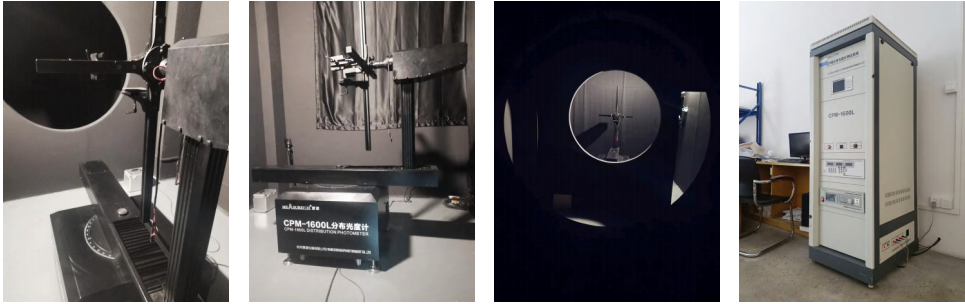


**2025**

FACILITATING CUSTOMER EXCHANGES AND STABILISING EXISTING MARKETS.

# EQUIPMENT INSTRUMENTS

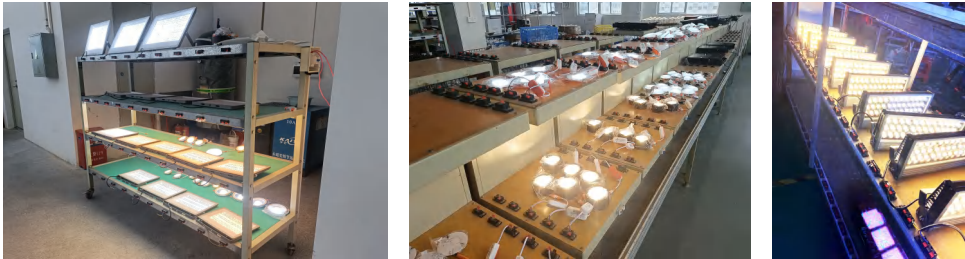
▼ CMP DISTRIBUTION PHOTOMETER TEST SYSTEM



▼ LIGHT SOURCE ANALYSIS SYSTEM / INTEGRATING SPHERE



▼ LAMP TEST AGING RACK



▼ ELECTRIC HOT BLAST DRYING OVEN / COMPREHENSIVE PERFORMANCE TESTER / PRODUCTION WORKSHOP



# PRODUCT SHOWROOM



- MAGNETIC LIGHT AREA
- OUTDOOR LIGHTING AREA
- WALL LIGHT AREA
- DOWN LIGHT AREA
- BULB/PANEL LIGHT PARTS AREA

# TARGET MARKET

## ■ Middle East



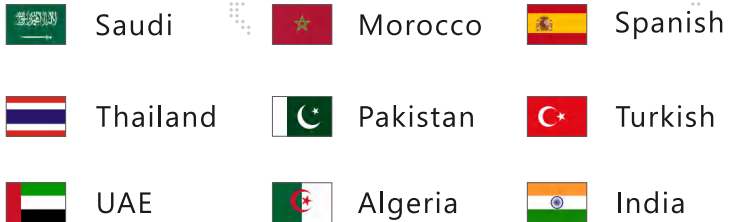
## ■ Europe



## ■ South East Asia



# CURRENT MARKET



Since 2020, Uwin lighting vigorously explore and develop the four target markets of Middle East, Europe and Southeast Asia to enhance the brand influence, and gain the support and trust of many foreign customers with high quality and professional, honest service purpose.



COMMERCIAL  
LIGHTING  
HOME  
LIGHTING  
ENGINEERED  
LIGHTING  
CUSTOMISATION





# LIGHT

Brightness is the soul of a beam of light.

The Uwin lighting series always have a high standard of colour rendering, which gives the light a bright texture.





# COLOR

The quantitative value of colour rendering from 0 to 100 is defined by the Commission Internationale de L'Eclairage (CIE) and is based on the quality of illumination using sunlight as a standard (i.e., the value RA100).

The higher the colour rendering, the closer the colour of the object displayed under the lighting is to that under sunlight; the lower the colour rendering, the more the colour of the object displayed under the lighting deviates from that under sunlight. Uwin lighting series, to convey the true colour, restore the original colour of the illuminated object, up to Ra80 or more to fully display the texture of the goods and the beauty of the colour.

Depending on the field of use or application of the lamp, the CIE (International Commission on Illumination) has established certain benchmarks. The following table gives the applicable range relative to the average colour rendering index Ra value.

Colour Rendering Index	Scope Of Use
Ra > 90	Colour Checking, Colour Correction, Clinical Examination, Gallery, Art gallery
90 > Ra ≥ 80	Printing Factories, Textile Mills, Restaurants, Shops, Hospitals, Schools, Office Buildings, Houses, Etc.
80 > Ra ≥ 60	General Workplace
60 > Ra ≥ 40	Roughing Plant
40 > Ra ≥ 20	General Lighting Places



90 > Ra ≥ 80



60 > Ra ≥ 40

**2700-3000K**  
Warm Light



**4500K**  
Natural Light



**6500K**  
Cold White



## LED DOWN LIGHT

PAGE  
01-38



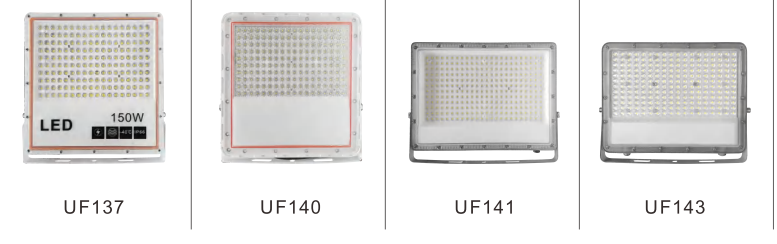
## LED PANEL LIGHT

PAGE  
39-60



## LED FLOOD LIGHT

PAGE  
65-72



## LED STREET LIGHT

PAGE  
73-80



# HIGH POWER

## 80W-60W-50W

**COB**

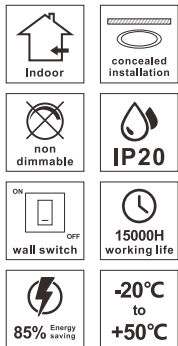
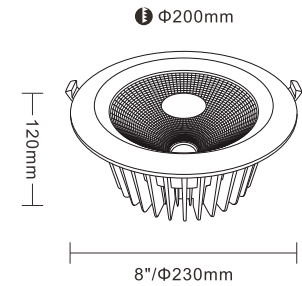
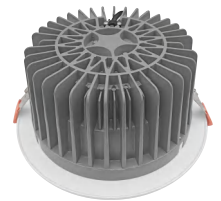
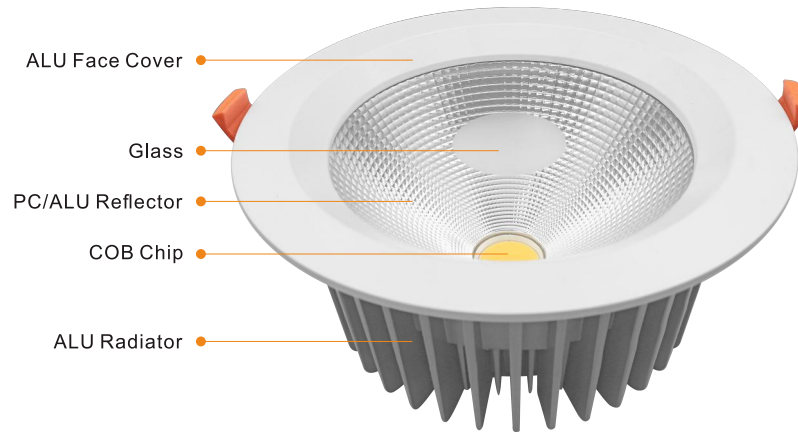
High-brightness COB light source delivers bright yet soft illumination with energy efficiency and minimal light decay

**ALU**

Premium die-cast aluminum radiator heat-resistant and distortion-free effectively rust-proof and corrosion-resistant



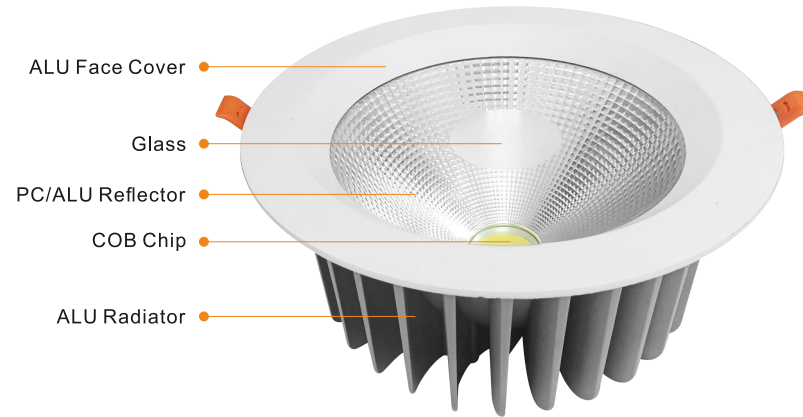
**LED DOWN LIGHT**  
**MODEL:UD58**



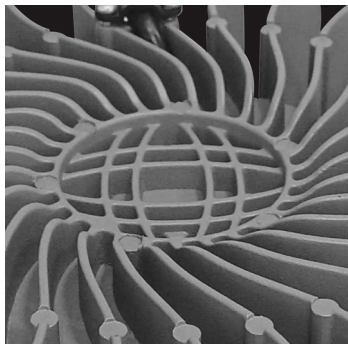
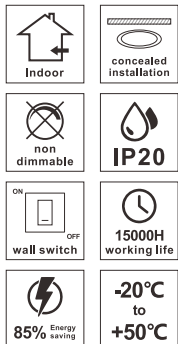
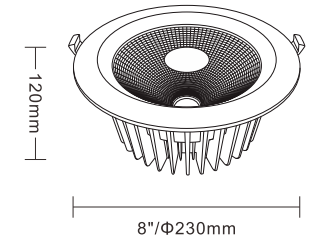
<b>Light Source:</b>	<b>Input Voltage:</b>	<b>Power:</b>
COB	AC85-265V 50/60Hz	80W
<b>Efficiency:</b>	<b>Luminous flux:</b>	<b>PF/DF:</b>
90LM/W	7200LM	0.9 / 0.9
<b>CRI:</b>	<b>CCT:</b>	<b>Size:</b>
≥80Ra	3000K/4500K/6500K	8"/Φ230xH120mm
<b>Cut Out:</b>	<b>Material:</b>	<b>Packing Size:</b>
Φ200mm	Aluminum+Glass	L620xW500xH260mm

## LED DOWN LIGHT

### MODEL:UD64

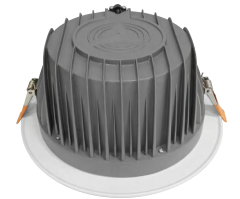
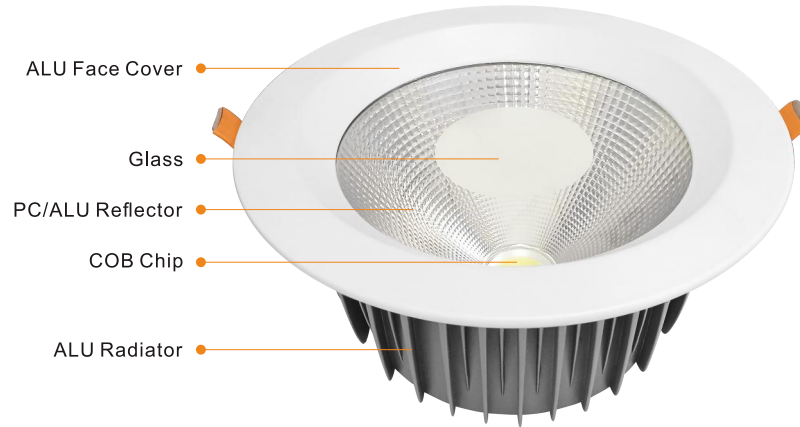


Φ200mm

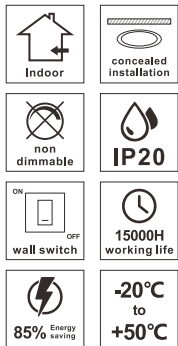
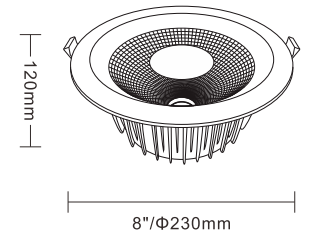


<b>Light Source:</b>	<b>Input Voltage:</b>	<b>Power:</b>
COB	AC85-265V 50/60Hz	60W
<b>Efficiency:</b>	<b>Luminous flux:</b>	<b>PF/DF:</b>
90LM/W	5400LM	0.9 / 0.9
<b>CRI:</b>	<b>CCT:</b>	<b>Size:</b>
≥80Ra	3000K/4500K/6500K	8"/Φ230xH120mm
<b>Cut Out:</b>	<b>Material:</b>	<b>Packing Size:</b>
Φ200mm	Aluminum+Glass	L620xW500xH260mm

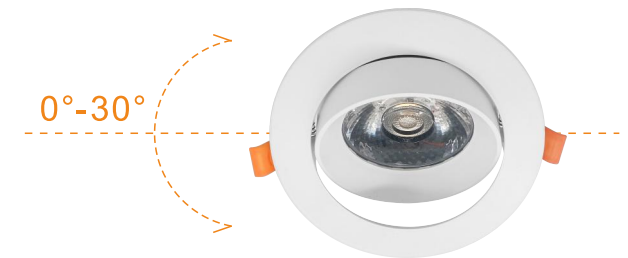
**LED DOWN LIGHT**  
**MODEL:UD100**



Φ200mm



<b>Light Source:</b>	<b>Input Voltage:</b>	<b>Power:</b>
COB	AC85-265V 50/60Hz	50W
<b>Efficiency:</b>	<b>Luminous flux:</b>	<b>PF/DF:</b>
90LM/W	4500LM	0.9 / 0.9
<b>CRI:</b>	<b>CCT:</b>	<b>Size:</b>
≥80Ra	3000K/4500K/6500K	8"/Φ230xH120mm
<b>Cut Out:</b>	<b>Material:</b>	<b>Packing Size:</b>
Φ200mm	Aluminum+Glass	L620xW500xH260mm

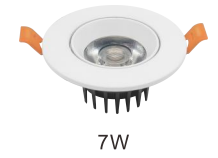
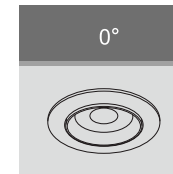
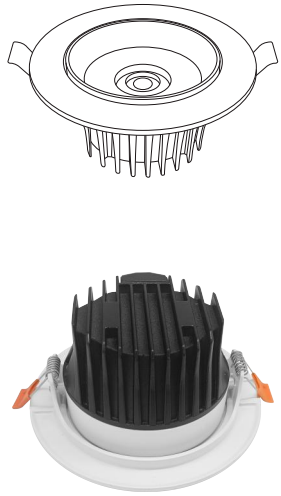


### UD90 Series

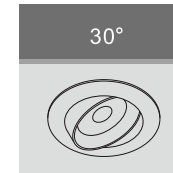
- Rotatable lamp holder •
- Anti-glare design •
- Aluminum Radiator •

# LED DOWN LIGHT

## MODEL:UD90



7W



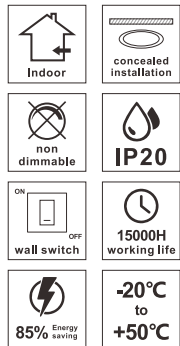
12W



20W



24W



AC85-265V  
50/60Hz

3000K  
4500K  
6500K

COB Chip

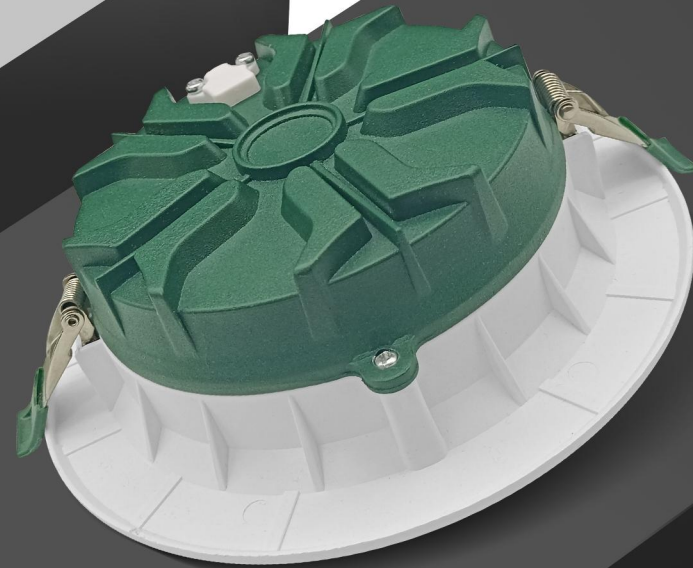
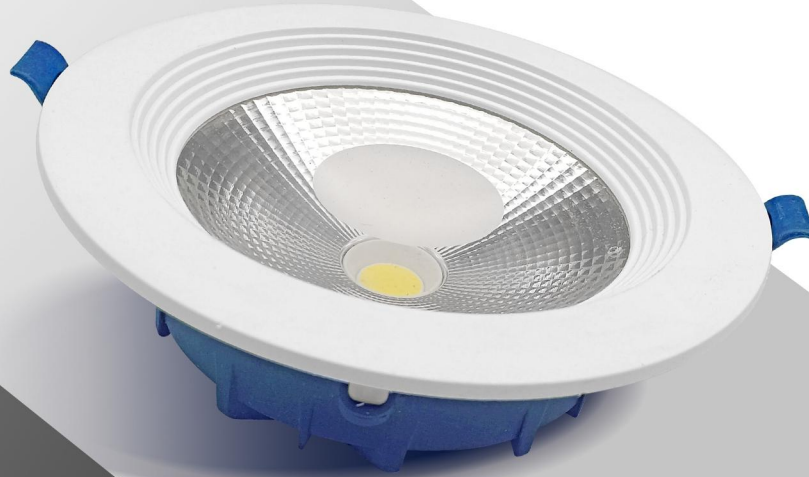
≥80Ra

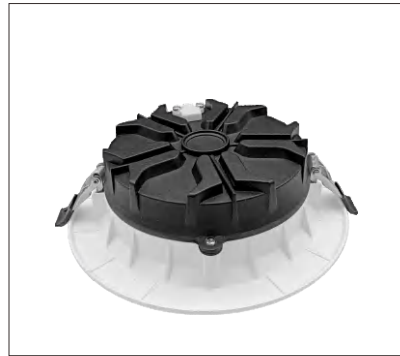
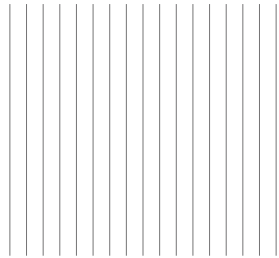
Material:  
Aluminum+Plastic

Power:	Efficiency:	Luminous flux:	PF/DF:	Size:	Cut Out:
7W	80LM/W	560LM	0.5/0.7	2.5"/Φ90xH43mm	Φ70mm
12W	80LM/W	960LM	0.5/0.7	3"/Φ110xH55mm	Φ90mm
20W	80LM/W	1600LM	0.5/0.7	4"/Φ140xH65mm	Φ120mm
24W	80LM/W	1920LM	0.5/0.7	6"/Φ170xH80mm	Φ150mm

# UD77 DOPAMINE SERIES

DOWN LIGHT





BOTTOM COVER COLOR



GREEN



PINK



ORANGE



GREY



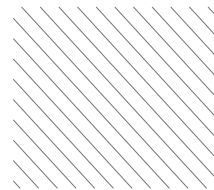
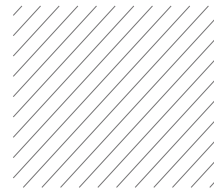
BLACK



BLUE

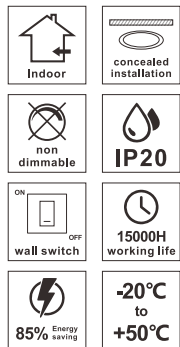
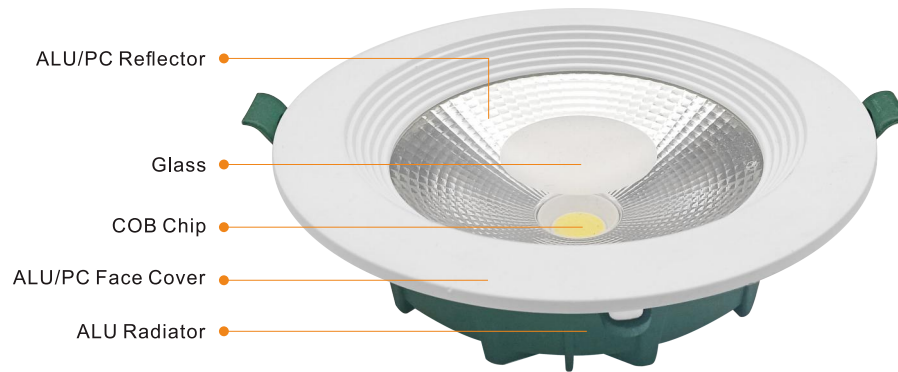
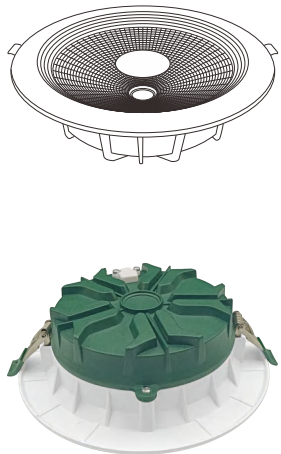


RED



# LED DOWN LIGHT

## MODEL:UD77



- AC85-265V  
50/60Hz
- 3000K  
4500K  
6500K
- COB Chip
- ≥80Ra
- Material:  
Aluminum+Plastic/All-aluminum

Power:	Efficiency:	Luminous flux:	PF/DF:	Size:	Cut Out:
7W	70LM/W	490LM	0.5/0.7	2.5"/Φ90mm	Φ70mm
10W	70LM/W	700LM	0.5/0.7	4"/Φ120mm	Φ100mm
15W	80LM/W	1200LM	0.5/0.7	5"/Φ160mm	Φ140mm
30W	80LM/W	2400LM	0.9/0.9	8"/Φ225mm	Φ200mm

**CTN Size:** 7W-580x495X220mm    10W-670x295X290mm    15W-580x345X360mm    30W-455x295X460mm

# DOWNLIGHT

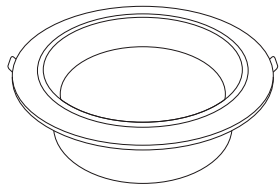
Simple design, suitable for various decorative lighting styles

- High brightness
- Up to 80% energy-saving
- Long working life



# LED DOWN LIGHT

## MODEL:UD84



7W



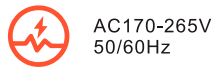
10W



20W



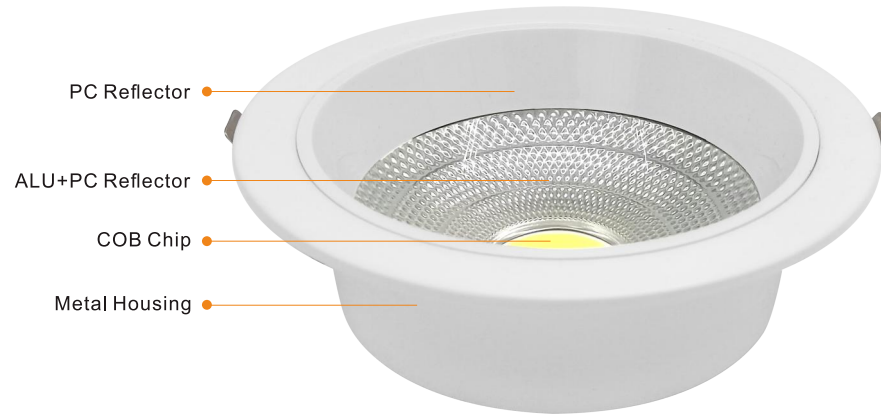
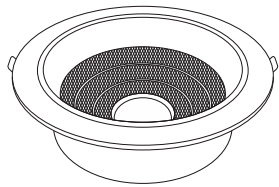
30W



Power:	Efficiency:	Luminous flux:	PF/DF:	Size:	Cut Out:
7W	80LM/W	560LM	0.5/0.7	2.5"/Φ90xH40mm	Φ70mm
10W	90LM/W	900LM	0.5/0.7	4"/Φ120xH40mm	Φ100mm
20W	85LM/W	1700LM	0.5/0.7	5"/Φ160xH50mm	Φ140mm
30W	90LM/W	2700LM	0.9/0.9	8"/Φ225xH50mm	Φ200mm

# LED DOWN LIGHT

## MODEL:UD85



7W



10W



20W



30W



AC170-265V  
50/60Hz



3000K  
4500K  
6500K



COB Chip



≥80Ra



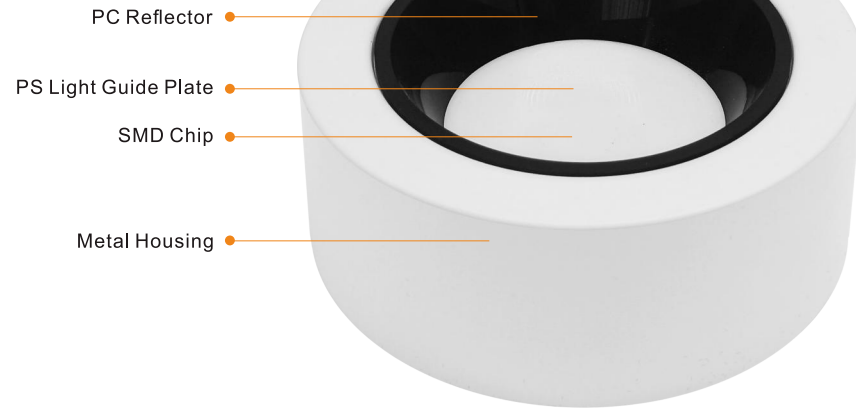
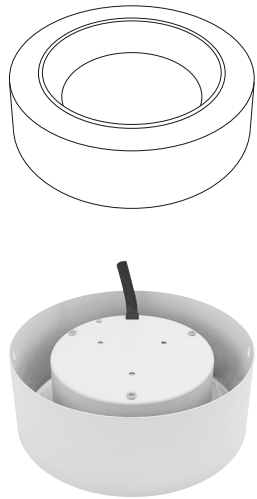
Material:  
Metal+Plastic



Power:	Efficiency:	Luminous flux:	PF/DF:	Size:	Cut Out:
7W	80LM/W	560LM	0.5/0.7	2.5"/Φ90xH40mm	Φ70mm
10W	90LM/W	800LM	0.5/0.7	4"/Φ120xH40mm	Φ100mm
20W	85LM/W	1700LM	0.5/0.7	5"/Φ160xH50mm	Φ140mm
30W	90LM/W	2700LM	0.9/0.9	8"/Φ225xH50mm	Φ200mm

# LED DOWN LIGHT

## MODEL:UD84R



7W



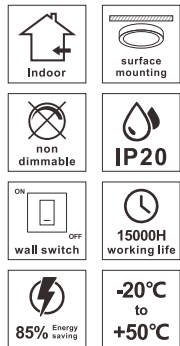
10W



20W



30W



AC170-265V  
50/60Hz

3000K  
4500K  
6500K

SMD Chip

≥80Ra

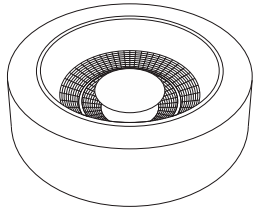
Material:  
Metal+Plastic

Power:	Efficiency:	Luminous flux:	PF/DF:	Size:
7W	80LM/W	560LM	0.5/0.7	Φ105xH50mm
10W	90LM/W	900LM	0.5/0.7	Φ140xH55mm
20W	85LM/W	1700LM	0.5/0.7	Φ180xH60mm
30W	90LM/W	2700LM	0.9/0.9	Φ230xH70mm

Housing Color:

# LED DOWN LIGHT

## MODEL:UD85R



7W



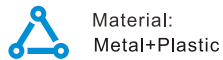
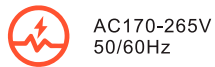
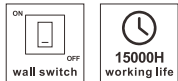
10W



20W



30W

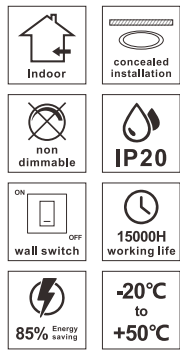
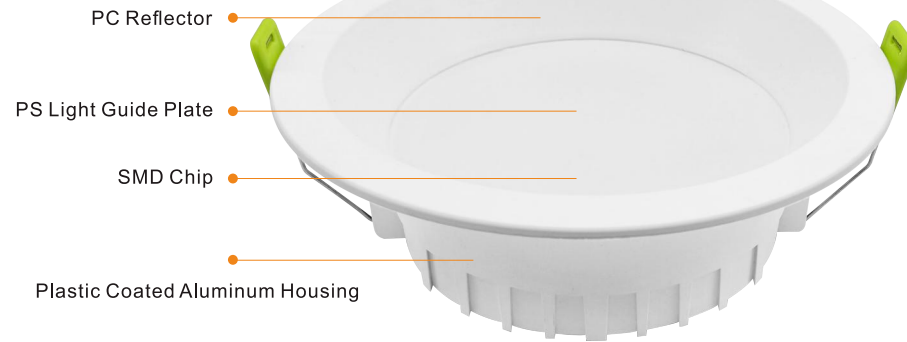
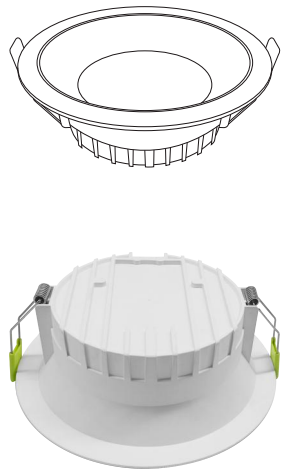


Power:	Efficiency:	Luminous flux:	PF/DF:	Size:
7W	80LM/W	560LM	0.5/0.7	Φ105xH50mm
10W	90LM/W	900LM	0.5/0.7	Φ140xH55mm
20W	85LM/W	1700LM	0.5/0.7	Φ180xH60mm
30W	90LM/W	2700LM	0.9/0.9	Φ230xH70mm

Housing Color:

# LED DOWN LIGHT

## MODEL:UD95



AC170-265V  
50/60Hz

3000K  
4500K  
6500K

SMD Chip

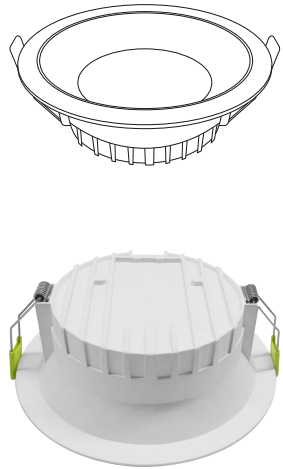
≥80Ra

Material:  
Plastic Coated Aluminum Housing

Power:	Efficiency:	Luminous flux:	PF/DF:	Size:	Cut Out:
7W	80LM/W	560LM	0.5/0.7	2.5"/Φ110xH45mm	Φ90mm
10W	80LM/W	800LM	0.5/0.7	3.5"/Φ127xH45mm	Φ100mm
18W	80LM/W	1440LM	0.5/0.7	5"/Φ160xH55mm	Φ140mm
24W	80LM/W	1920LM	0.5/0.7	8"/Φ220xH55mm	Φ200mm

# LED DOWN LIGHT

## MODEL:UD95



7W



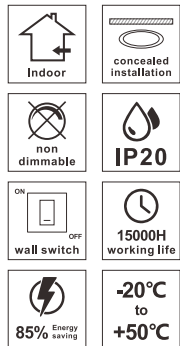
10W



18W



24W



AC170-265V  
50/60Hz

3000K  
4500K  
6500K

SMD Chip

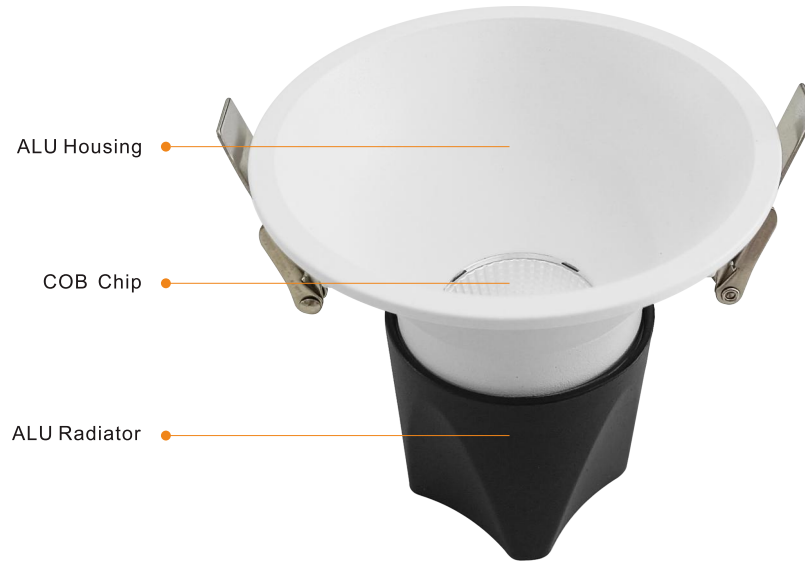
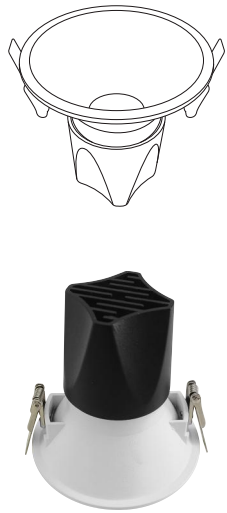
≥80Ra

Material:  
Plastic Coated Aluminum Housing

Power:	Efficiency:	Luminous flux:	PF/DF:	Size:	Cut Out:
7W	80LM/W	560LM	0.5/0.7	2.5"/Φ110xH45mm	Φ90mm
10W	80LM/W	800LM	0.5/0.7	3.5"/Φ127xH45mm	Φ100mm
18W	80LM/W	1440LM	0.5/0.7	5"/Φ160xH55mm	Φ140mm
24W	80LM/W	1920LM	0.5/0.7	8"/Φ220xH55mm	Φ200mm

# LED DOWN LIGHT

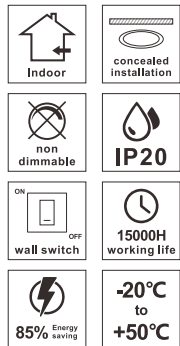
## MODEL:UD96



7W



12W



 AC85-265V  
50/60Hz

 3000K  
4500K  
6500K

 COB Chip

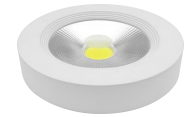
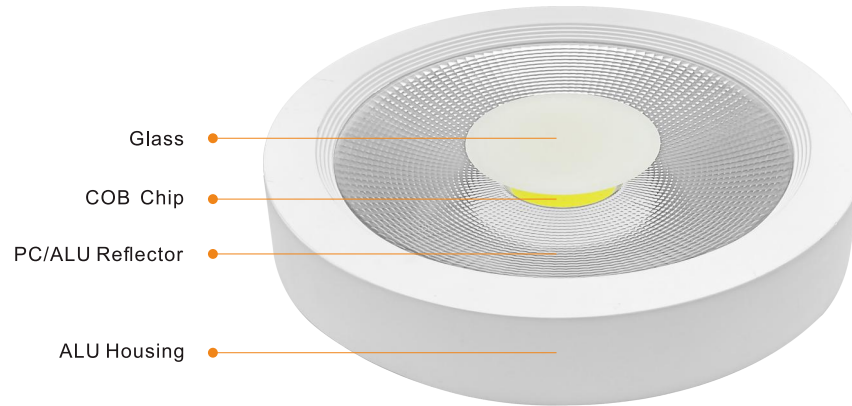
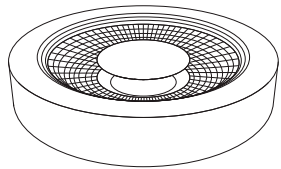
 ≥80Ra

 Material:  
Aluminum Housing

Power:	Efficiency:	Luminous flux:	PF/DF:	Size:	Cut Out:
7W	80LM/W	560LM	0.5/0.7	Φ90xH90mm	Φ75mm
12W	80LM/W	960LM	0.5/0.7	Φ107xH112mm	Φ90mm

# LED DOWN LIGHT

## MODEL:UD12



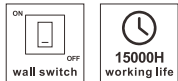
20W



30W



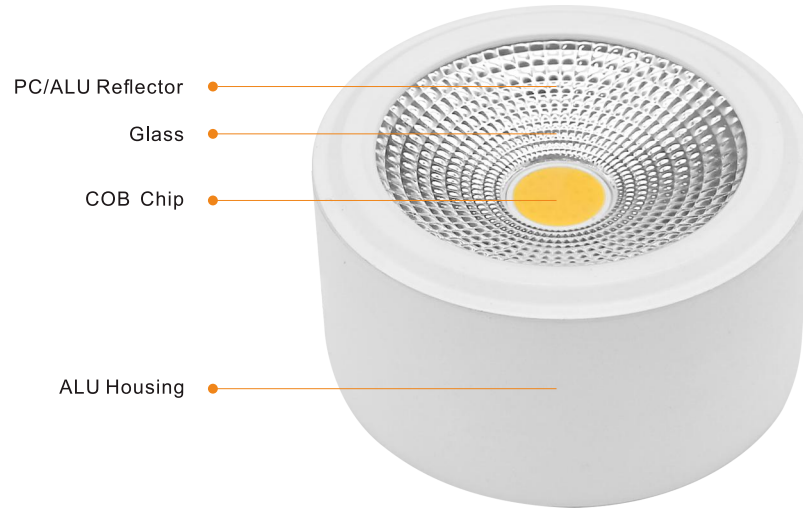
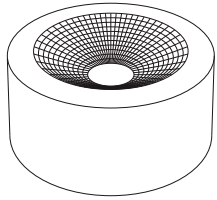
40W



Power:	Efficiency:	Luminous flux:	PF/DF:	Size:
20W	80LM/W	1600LM	0.5/0.7	5"/Φ170xH40mm
30W	90LM/W	2700LM	0.9/0.9	8"/Φ220xH40mm
40W	90LM/W	3600LM	0.9/0.9	10"/Φ300xH48mm

# LED DOWN LIGHT

## MODEL:UD40



7W



10W



15W



25W



AC85-265V  
50/60Hz

3000K  
4500K  
6500K



COB Chip

≥80Ra



15000H  
working life

Material:  
Aluminum + Glass



-20°C  
to  
+50°C

Power:	Efficiency:	Luminous flux:	PF/DF:	Size:
7W	80LM/W	560LM	0.5/0.7	Φ70xH43mm
10W	80LM/W	800LM	0.5/0.7	Φ90xH47mm
15W	80LM/W	1200LM	0.5/0.7	Φ110xH60mm
25W	80LM/W	2000LM	0.5/0.7	Φ130xH65mm

Housing Color:

# LED PANEL LIGHT SERIES

Panel lights are simple, practical and available in a variety of sizes, and are the most common products used in commercial and home lighting.

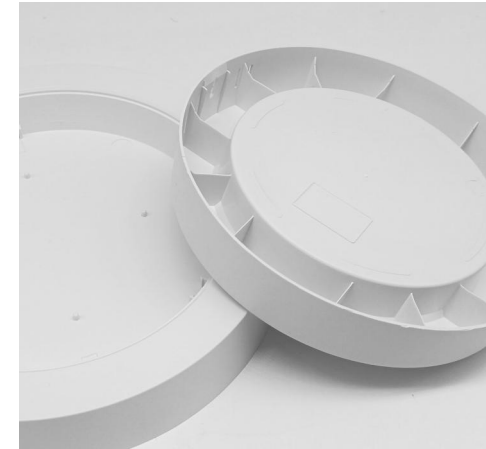


## UP46/UP47 DOB PANEL LIGHT



### Plastic Housing

Good heat dissipation  
Anti-corrosion  
Rust-proof



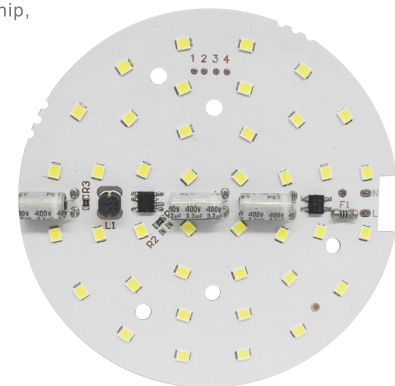
### 6W-24W

Multiple power ratings and specifications available to meet the lighting needs of venues of varying sizes.

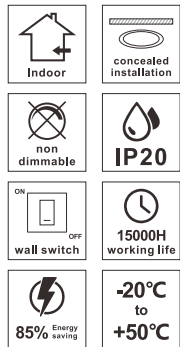
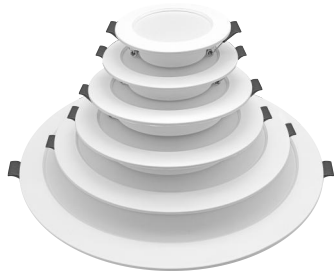
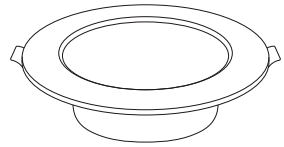
### DOB DRIVE


"Driver on Board" design represents an innovative application of LED lighting, where the LED driver components are directly integrated beneath or adjacent to the LED chip, achieving high integration between the driver and the light source.

- Compact size
- Quick response
- Cost reduction
- Extended lifespan
- Simplified circuit design



**DOB PANEL LIGHT**  
**MODEL:UP46R**



 AC170-265V  
50/60Hz

 3000K  
4500K  
6500K

 SMD Chip

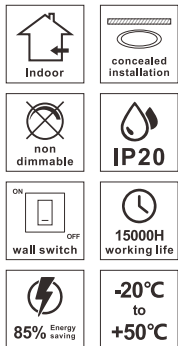
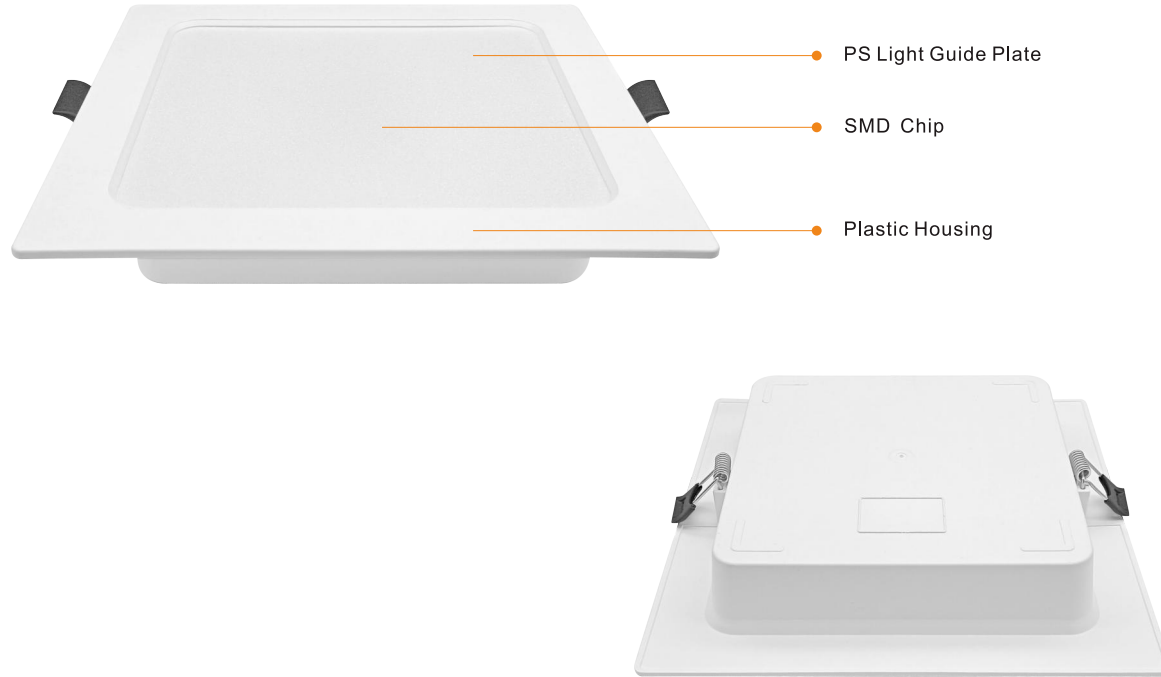
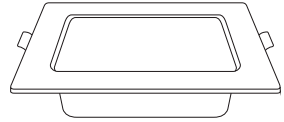
 ≥80Ra


 Material:Plastic

Power:	Efficiency:	Luminous flux:	PF/DF:	Size:	Cut Out:
6W	70LM/W	420LM	0.5/0.7	2.5"/Φ98xH24.5mm	Φ70-75mm
9W	80LM/W	720LM	0.5/0.7	3.5"/Φ118xH24.5mm	Φ95-110mm
12W	80LM/W	960LM	0.5/0.7	4"/Φ145xH25mm	Φ115-120mm
15W	80LM/W	1200LM	0.5/0.7	6"/Φ170xH25mm	Φ140mm
18W	80LM/W	1440LM	0.5/0.7	8"/Φ225xH28.5mm	Φ195mm
24W	80LM/W	1920LM	0.5/0.7	10"/Φ298xH29.5mm	Φ260mm

# DOB PANEL LIGHT

## MODEL:UP46S



 AC170-265V  
50/60Hz

 3000K  
4500K  
6500K

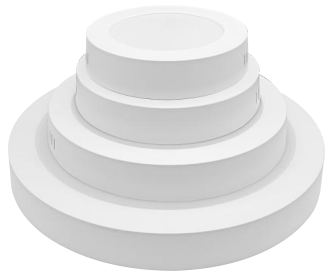
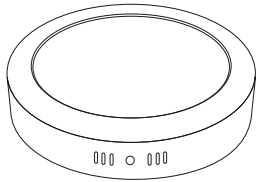
 SMD Chip

 ≥80Ra

 Material:Plastic

Power:	Efficiency:	Luminous flux:	PF/DF:	Size:	Cut Out:
6W	70LM/W	420LM	0.5/0.7	L145xW145xH25.5mm	L115xW115mm
9W	80LM/W	720LM	0.5/0.7	L145xW145xH25.5mm	L115xW115mm
12W	80LM/W	960LM	0.5/0.7	L175xW175xH25.5mm	L145xW145mm
18W	80LM/W	1440LM	0.5/0.7	L223xW223xH28mm	L190xW190mm
24W	80LM/W	1920LM	0.5/0.7	L298xW298xH28.5mm	L258xW258mm

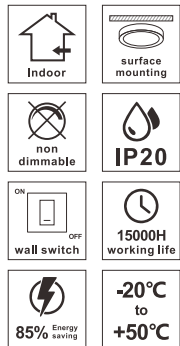
**DOB PANEL LIGHT**  
**MODEL:UP47R**




● PS Light Guide Plate

● SMD Chip

● Plastic Housing



 AC170-265V  
50/60Hz

 3000K  
4500K  
6500K

 SMD Chip

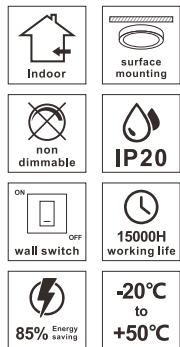
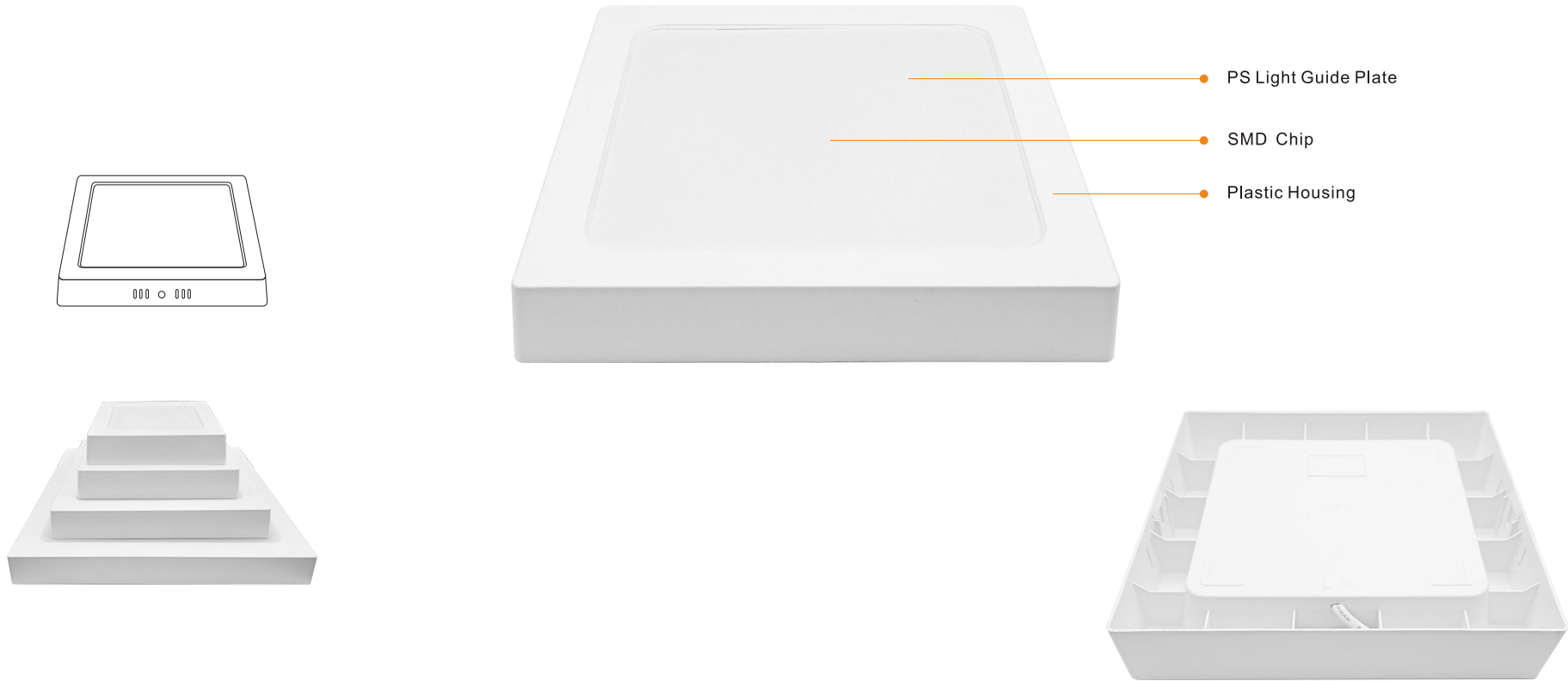
 ≥80Ra

 Material:Plastic


Power:	Efficiency:	Luminous flux:	PF/DF:	Size:
6W	70LM/W	420LM	0.5/0.7	4"/Φ145xH32mm
9W	80LM/W	720LM	0.5/0.7	4"/Φ145xH32mm
12W	80LM/W	960LM	0.5/0.7	6"/Φ170xH32mm
18W	80LM/W	1440LM	0.5/0.7	8"/Φ225xH32mm
24W	80LM/W	1920LM	0.5/0.7	10"/Φ298xH32mm

# DOB PANEL LIGHT


## MODEL:UP47S



 AC170-265V  
50/60Hz

 3000K  
4500K  
6500K

 SMD Chip

 ≥80Ra

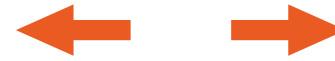
 Material:Plastic

Power:	Efficiency:	Luminous flux:	PF/DF:	Size:
6W	70LM/W	420LM	0.5/0.7	L145xW145xH25.5mm
9W	80LM/W	720LM	0.5/0.7	L145xW145xH25.5mm
12W	80LM/W	960LM	0.5/0.7	L175xW175xH25.5mm
18W	80LM/W	1440LM	0.5/0.7	L223xW223xH28mm
24W	80LM/W	1920LM	0.5/0.7	L298xW298xH28.5mm

UP7/UP20

## RIMLESS PANEL LIGHT

Rimless minimalist design, high-brightness LED light source, embodying the beauty of light and shadow.



Free hole size

### Aluminum Base Cover

Ultra-thin aluminum base cover, heat-resistant and resistant to deformation, effectively prevents corrosion and rust for enhanced durability.



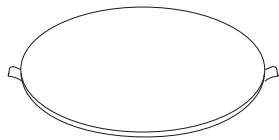
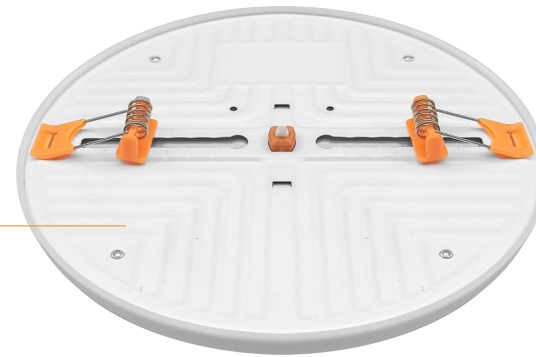
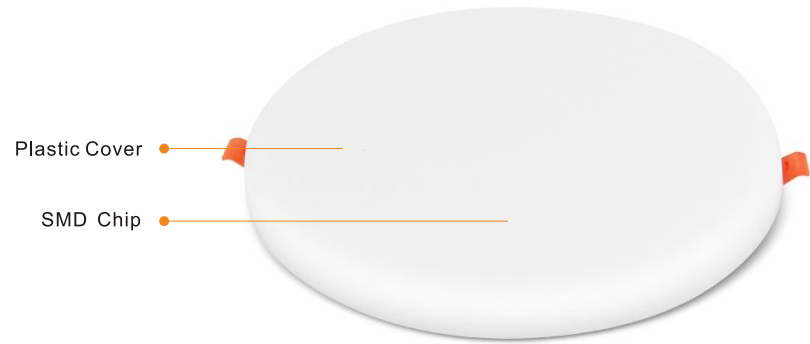
### Plastic Lampshade

The frosted-textured, milky-white translucent shade boasts a light transmission rate exceeding 90%, delivering bright yet soft illumination that is gentle on the eyes.



# RIMLESS PANEL LIGHT

## MODEL:UP7R



9W



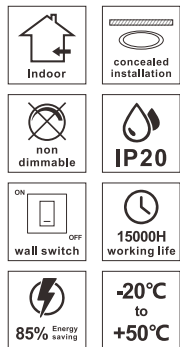
18W



24W



36W



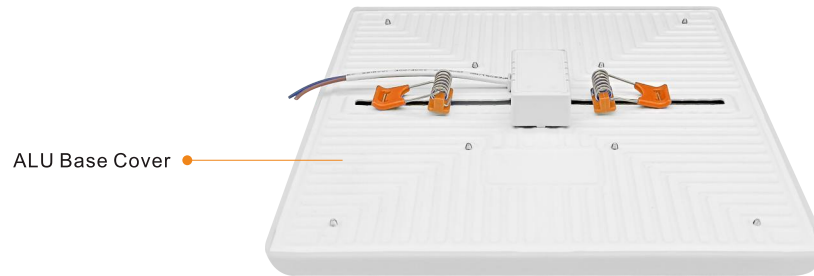
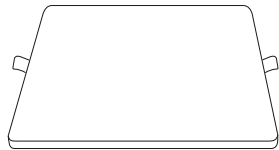
Power:	Efficiency:	Luminous flux:	PF/DF:	Size:	Cut Out:
9W	90LM/W	810LM	0.5/0.7	Φ100xH17mm	Φ50-70mm
18W	100LM/W	1800LM	0.5/0.7	Φ120xH17mm	Φ50-95mm
24W	100LM/W	2400LM	0.5/0.7	Φ170xH17mm	Φ50-140mm
36W	110LM/W	3960LM	0.9/0.9	Φ220xH17mm	Φ50-190mm
48W	110LM/W	5280LM	0.9/0.9	Φ300xH17mm	Φ50-190mm

**CNS Size:**

9W-L545xW460xH225mm    18W-L460xW390xH265mm    24W-L480xW365xH365mm    36W-L685xW475xH245mm

# RIMLESS PANEL LIGHT

## MODEL:UP7S



9W



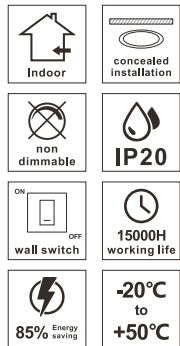
18W



24W



36W



 AC85-265V  
50/60Hz

 3000K  
4500K  
6500K

 SMD Chip

 ≥80Ra

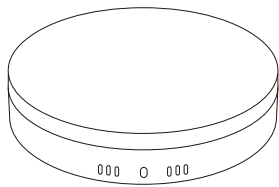
 Material:  
Aluminum + Plastic

 Beam Angle:  
15°- 45°

Power:	Efficiency:	Luminous flux:	PF/DF:	Size:	Cut Out:
9W	90LM/W	810LM	0.5/0.7	L100xW100mm	L/W50-70mm
18W	100LM/W	1800LM	0.5/0.7	L120xW120mm	L/W50-95mm
24W	100LM/W	2400LM	0.5/0.7	L170xW170mm	L/W50-140mm
36W	110LM/W	3960LM	0.9/0.9	L220xW220mm	L/W50-190mm

# RIMLESS PANEL LIGHT

## MODEL:UP20R



18W



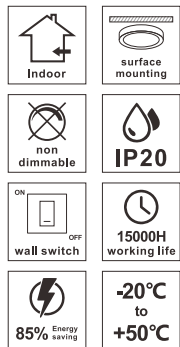
24W



36W



48W



AC85-265V  
50/60Hz

3000K  
4500K  
6500K

SMD Chip

≥80Ra

Material:  
Aluminum + Plastic

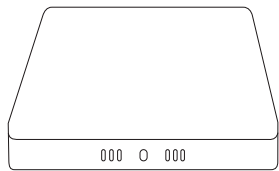
Power:	Efficiency:	Luminous flux:	PF/DF:	Beam Angle:	Size:
18W	100LM/W	1800LM	0.5/0.7	15°-45°	Φ120xH42mm
24W	100LM/W	2400LM	0.5/0.7	15°-45°	Φ170xH42mm
36W	110LM/W	3960LM	0.9/0.9	15°-45°	Φ220xH42mm
48W	110LM/W	5280LM	0.9/0.9	15°-45°	Φ300xH42mm

**CNS Size:**

18W-L460xW390xH265mm    24W-L530xW380xH380mm    36W-L710xW270xH475mm    48W-L630xW625xH320mm

# RIMLESS PANEL LIGHT

MODEL:UP20S



18W



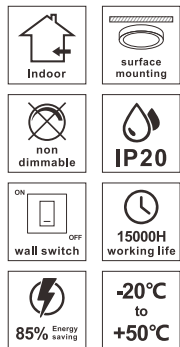
24W



36W



48W



AC85-265V  
50/60Hz

3000K  
4500K  
6500K

SMD Chip

≥80Ra

Material:  
Aluminum + Plastic

Power:	Efficiency:	Luminous flux:	PF/DF:	Beam Angle:	Size:
18W	100LM/W	1800LM	0.5/0.7	15°-45°	L120xW120xH42mm
24W	100LM/W	2400LM	0.5/0.7	15°-45°	L170xW170xH42mm
36W	110LM/W	3960LM	0.9/0.9	15°-45°	L220xW220xH42mm
48W	110LM/W	5280LM	0.9/0.9	15°-45°	L300xW300xH42mm

**CNS Size:**

18W-L460xW390xH265mm    24W-L530xW380xH380mm    36W-L710xW270xH475mm    48W-L630xW625xH320mm

# LED OUTDOOR LIGHT SERIES

Outdoor lights are widely used, it has waterproof, high brightness and energy saving, long working time and stable performance, it is a necessary product for urban construction and family outdoor lighting.





## LED FLOOD LIGHT

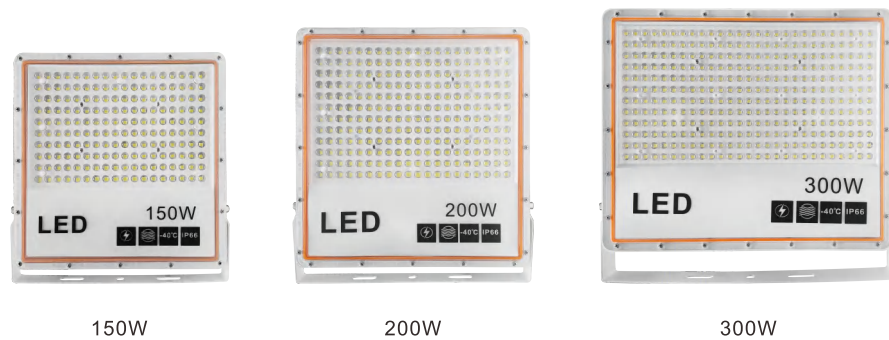
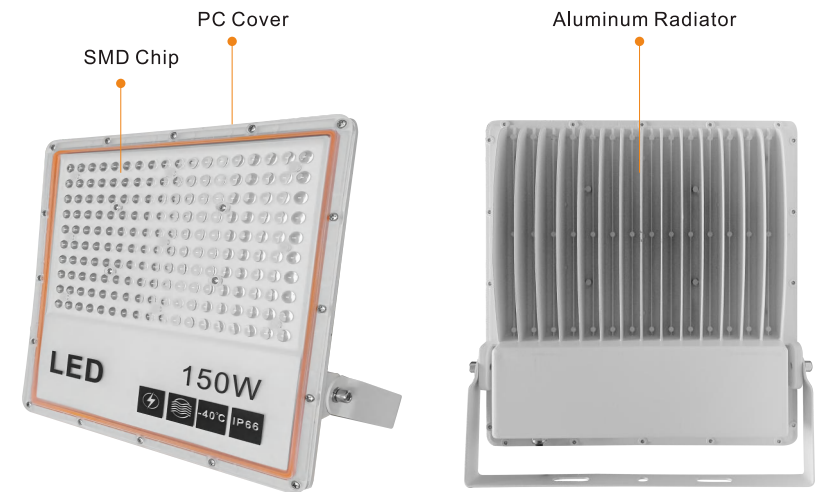
- High brightness
- Large irradiation area
- High quality aluminum housing
- High waterproof rating



## LED FLOOD LIGHT


### MODEL:UF137

Power	Size	Efficiency	Lumens	PF/DF	CRI
30W	167x157x31mm	100LM/W	3000LM	0.9/0.9	≥80Ra
50W	197x188x39mm	100LM/W	5000LM	0.9/0.9	≥80Ra
100W	256x248x44mm	110LM/W	11000LM	0.9/0.9	≥80Ra
150W	298x288x48mm	110LM/W	16500LM	0.9/0.9	≥80Ra
200W	327x316x48mm	110LM/W	2000LM	0.9/0.9	≥80Ra
300W	405x335x56mm	110LM/W	331000LM	0.9/0.9	≥80Ra
400W	428x365x56mm	110LM/W	44000LM	0.9/0.9	≥80Ra



 **Waterproof Rating**  
IP66

 **Input Voltage**  
AC85-265V 50/60Hz

 **CCT**  
3000K/4000K/6500K

 **Working Temperature**  
-40°C to +50°C

 **Chip Type**  
SMD

 **Material**  
Aluminum+Plastic

 **Working Life**  
15000H

## LED FLOOD LIGHT

### MODEL:UF140

Power	Size	Efficiency	Lumens	PF/DF	CRI
30W	150x180x32mm	100LM/W	3000LM	0.9/0.9	≥80Ra
50W	186x217x34mm	100LM/W	5000LM	0.9/0.9	≥80Ra
100W	225x258x34mm	110LM/W	11000LM	0.9/0.9	≥80Ra
150W	272x284x35mm	110LM/W	16500LM	0.9/0.9	≥80Ra
200W	314x320x35mm	110LM/W	22000LM	0.9/0.9	≥80Ra



50W




100W




150W



 **Waterproof Rating**  
IP66

 **Input Voltage**  
AC170-265V 50/60Hz

 **CCT**  
3000K/4000K/6500K

 **Working Temperature**  
-20°C to +50°C

 **Chip Type**  
SMD

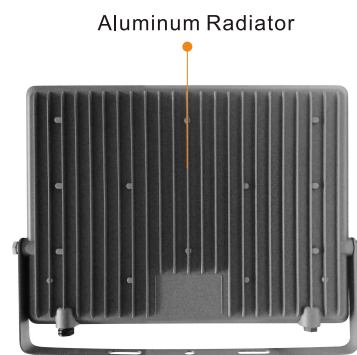
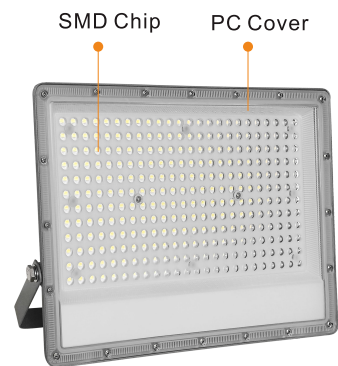
 **Material**  
Aluminum+Plastic

 **Working Life**  
15000H

## LED FLOOD LIGHT


### MODEL:UF141

Power	Size	Efficiency	Lumens	PF/DF	CRI
10W	110x90x23.5mm	100LM/W	1000LM	0.5/0.7	≥80Ra
20W	123x94x23.5mm	100LM/W	2000LM	0.5/0.7	≥80Ra
30W	123x148x23.8mm	100LM/W	3000LM	0.9/0.9	≥80Ra
50W	176x135x25mm	110LM/W	5500LM	0.9/0.9	≥80Ra
100W	241x185x25mm	110LM/W	11000LM	0.9/0.9	≥80Ra
150W	300x224x25mm	110LM/W	16500LM	0.9/0.9	≥80Ra



 **Waterproof Rating**  
IP66

 **Input Voltage**  
AC170-265V 50/60Hz

 **CCT**  
3000K/4000K/6500K

 **Working Temperature**  
-20°C to +50°C

 **Chip Type**  
SMD

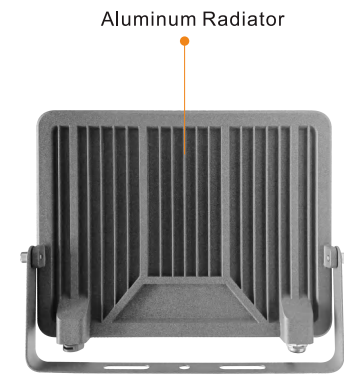
 **Material**  
Aluminum+Plastic

 **Working Life**  
15000H

## LED FLOOD LIGHT

### MODEL:UF143

Power	Size	Efficiency	Lumens	PF/DF	CRI
30W	148x123x23.8mm	100LM/W	3000LM	0.9/0.9	≥80Ra
50W	176x136x25mm	120LM/W	6000LM	0.9/0.9	≥80Ra
100W	241x185x25mm	120LM/W	12000LM	0.9/0.9	≥80Ra
150W	300x224x25mm	120LM/W	18000LM	0.9/0.9	≥80Ra



 **Waterproof Rating**  
IP66

 **Input Voltage**  
AC170-265V 50/60Hz

 **CCT**  
3000K/4000K/6500K

 **Working Temperature**  
-20°C to +50°C

 **Chip Type**  
SMD

 **Material**  
Aluminum+Plastic

 **Working Life**  
15000H



## LED STREET LIGHT

Lighting up the city

- Works well in thunderstorms
- High brightness and energy saving
- High quality aluminum housing
- Long working life



## LED STREET LIGHT

### MODEL:US006

Power	Size	Efficiency	Lumens	PF/DF	CRI
100W	525x183x52mm	120LM/W	12000LM	0.9/0.9	≥80Ra
150W	625x188x50mm	120LM/W	18000LM	0.9/0.9	≥80Ra
200W	650x220x50mm	120LM/W	24000LM	0.9/0.9	≥80Ra



100W




150W



200W



 **Waterproof Rating**  
IP66

 **CCT**  
3000K/4000K/6500K

 **Chip Type**  
SMD

 **Working Life**  
15000H

 **Input Voltage**  
AC85-265V 50/60Hz

 **Working Temperature**  
-20°C to +50°C

 **Material**  
Aluminum+Plastic

## LED STREET LIGHT MODEL:US012

Power	Size	Efficiency	Lumens	PF/DF	CRI
100W	465x196x75mm	120LM/W	12000LM	0.9/0.9	≥80Ra
150W	525x215x75mm	120LM/W	18000LM	0.9/0.9	≥80Ra
200W	595x245x75mm	120LM/W	24000LM	0.9/0.9	≥80Ra



100W




150W



200W



 **Waterproof Rating**  
IP66

 **CCT**  
3000K/4000K/6500K

 **Chip Type**  
SMD

 **Working Life**  
15000H

 **Input Voltage**  
AC170-265V 50/60Hz

 **Working Temperature**  
-20°C to +50°C

 **Material**  
Aluminum+Plastic

## LED STREET LIGHT

### MODEL:US013

Power	Size	Efficiency	Lumens	PF/DF	CRI
150W	610x290x75mm	110LM/W	16500LM	0.9/0.9	≥80Ra
200W	690x290x75mm	110LM/W	21000LM	0.9/0.9	≥80Ra
250W	765x290x75mm	110LM/W	27500LM	0.9/0.9	≥80Ra



100W




150W



200W



 **Waterproof Rating**  
IP66

 **CCT**  
3000K/4000K/6500K

 **Chip Type**  
SMD

 **Working Life**  
15000H

 **Input Voltage**  
AC85-265V 50/60Hz

 **Working Temperature**  
-20°C to +50°C

 **Material**  
Aluminum+Plastic

# UWIN LIGHTING

## JIANGMEN CHUANGXING LIGHTING APPLIANCES CO.,LTD

---

📍 3-4/F, Building 1, Industrial Acceleration Park, No. 331 Nanshan Road,  
Jianghai District, Jiangmen City, Guangdong Province

🌐 <http://www.chuangxingled.com>      <http://www.uwinled.com>



WhatsApp



WeChat

☎ +8619966317361(WhatsApp & WeChat)

📞 342651024

✉ [eason@uwinled.com](mailto:eason@uwinled.com)